



การเตรียมพร้อมสำหรับ Green Supply Chain



ธงชัย บุญยโชติมา
สภาหอการค้าแห่งประเทศไทย
2 เมษายน 2556

การเตรียมพร้อมสำหรับ Green Supply Chain

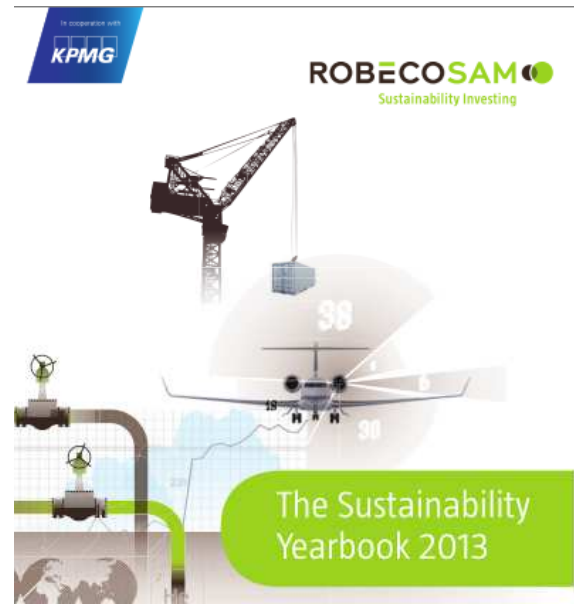
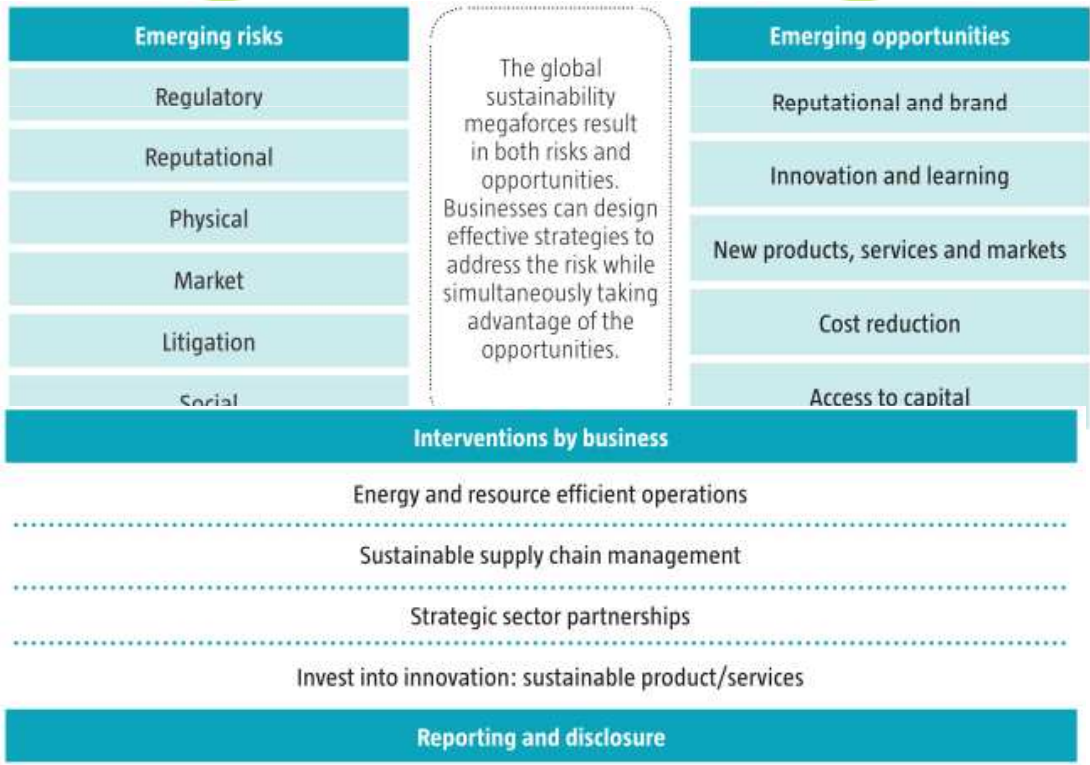
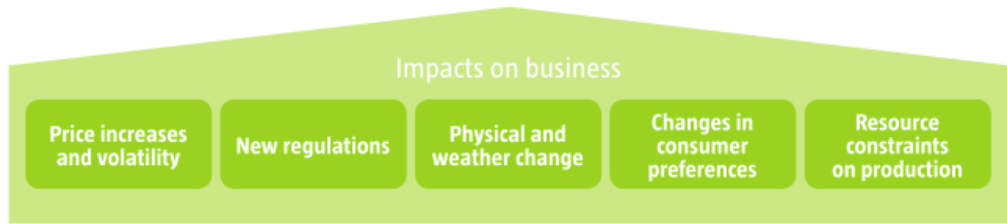
- แนวโน้มและแรงกดดันต่อภาคธุรกิจ
- สิ่งท้าทาย
- ตัวอย่างการปรับตัวทางธุรกิจ



Next Economy

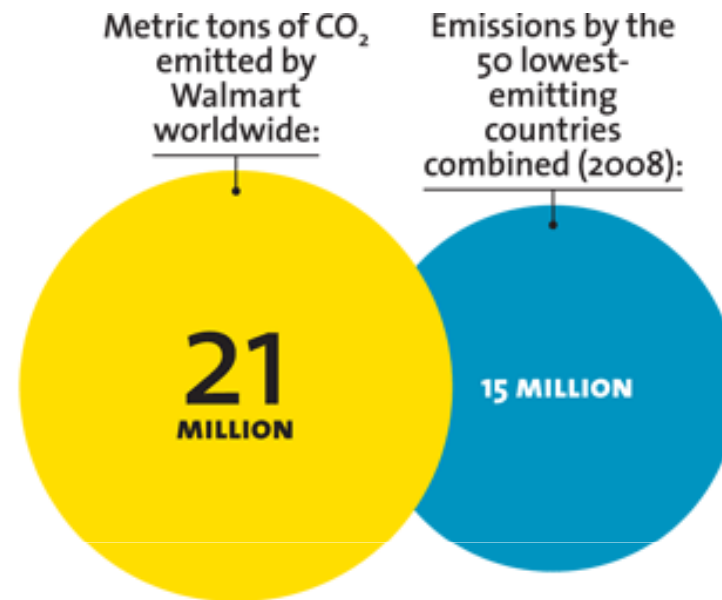
- **Green Economy**
- **Blue Economy**
- **Circular Economy**
- **Sharing Economy**





Source: KPMG International (2011). Expect the Unexpected: Building business value in a changing world.

Wal-mart : Global Sustainability Index



Supplier Sustainability Assessment Questions

Energy and Climate

Reduce energy costs and greenhouse gas emissions

1. Have you measured your corporate greenhouse gas emissions? (Y/N)
2. Have you opted to report your greenhouse gas emissions to the Carbon Disclosure Project (CDP)? (Y/N)
3. What are your total greenhouse gas emissions reported in your most recently completed report? (Enter total metric tons CO₂e, e.g. CDP6 Questionnaire, Section 2b – Scope 1 and 2 emissions)
4. Have you set publicly available greenhouse gas reduction targets? If yes, what are those targets? (Enter total metric tons and target date; 2 fields or leave blank)



: Supplier Environmental Sustainability Scorecard

SC Environmental Sustainability Scorecard

(FILL IN ALL APPLICABLE SHADED CELLS; NON-SHADED ARE OPTIONAL)

INTERIM RATING: 0 (Auto-calculated)

Submit Date (Month DD, YYYY):		Scope Code & Annual Data: Enter Scope Code (based on your capability to measure): P = P&G Product-specific materials and services (DESIRED) S = Site(s) (combined total) that create for P&G C = Corporate level NA = Measure does not apply to my industry/service (explain)						Overall comments/exclusions regarding data scope:	
Company Name/Unit (below):									
Core Measure	I Status	Unit of Measure (from dropdown menu)	2011 (Current Year)		2010 (Past Year)		yyyy		Comments (Use additional pages/attachments as needed to explain)
			Jan - Dec		Jan - Dec		Jan - Dec		
			Scope	Data	Scope	Data	Scope	Data	
(Electric) Energy Usage									
(Fuel) Energy Usage									
(Input / Withdrawal) Water Usage									
(Output / Discharge) Water Usage									
Hazardous Waste Disposal									
Kyoto Greenhouse Gas Emissions Direct (Scope 1)									
Kyoto Greenhouse Gas Emissions Indirect (Scope 2)									
Annual Volume/Output	N A		C P S		C P S		C P S		

NIKE MATERIALS SUSTAINABILITY INDEX

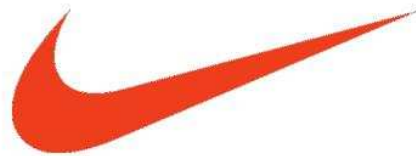


Table 1. Quantitative and Qualitative Indicator Scoring Summary

QUANTITATIVE POINTS		QUALITATIVE INDICATOR POINTS	
IMPACT CATEGORY	MAXIMUM POINTS	IMPACT CATEGORY	MAXIMUM POINTS
CHEMISTRY		ENVIRONMENTAL ATTRIBUTES	
• Carcinogenicity	2.5	• Nike Green Chemistry Program	7
• Acute Toxicity	2.5	• Water Conservation	5
• Chronic Toxicity	2.5	• Recycled Content	12
• Reproductive Toxicity and Endocrine Disrupters	1.4	• Organic Content	5
TOTAL	9	SUPPLIER PRACTICES	
ENERGY AND GREENHOUSE GAS (GHG) INTENSITY		• Restricted Substance List	5
• Energy Intensity	4.4	• Nike Water Program	5
• GHG Intensity	6.6	• Nike Energy and Carbon Program*	4
TOTAL	11	• Sustainability Certifications and Programs	7
WATER AND LAND USE INTENSITY			
• Water Intensity	9.4		
• Land Use Intensity	3.6		
TOTAL	13		
PHYSICAL WASTE			
• Hazardous	6.8		
• Municipal	4.3		
• Industrial	3.4		
• Recyclable/Compostable	1.7		
• Mineral	0.9		
TOTAL	17		
TOTAL QUANTITATIVE POINTS		50	+ TOTAL QUALITATIVE INDICATOR POINTS 50
TOTAL POSSIBLE POINTS = 100			

Honda Rolls Out Global Supply Chain Guidelines

Current Honda Green Purchasing Guidelines			Revision	Revised Honda Green Purchasing Guidelines (Jan. 2011)		
Policy		Promoting purchasing of environmentally-responsible products		Policy		<ul style="list-style-type: none"> • Promoting purchasing of environmentally-responsible products • Add "environment" as one of supplier evaluation items (Quality, Cost, Delivery, Development, Environment)
Items to be Managed	Corporate Structure	Introducing environmental management system (ISO14001 by primary suppliers)		Management	Establishing environmental management system for all areas of product and corporate activities	
	Production	Managing its environmental footprint during production (Amount of CO ₂ emissions)		Corporate Activities	Managing its environmental footprint in all areas of corporate activities (Amount of CO ₂ and other greenhouse gas emissions)	
	Product	Managing use of chemical substances		Product	Improvement of product fuel efficiency Managing use of chemical substances	
Subject of these guidelines		Suppliers in Japan (All suppliers for use of chemical substances)		Subject of these guidelines		All suppliers around the world



SAFeway

Locally Grown

Grown by Canadians for Canadians.

There's an extraordinary amount of care, quality and freshness that comes only from locally grown Canadian produce. We take pride not just in selling, but also in promoting the outstanding products of our local Canadian growers.

Tomatoes on the Vine
Grown by E.C. McRae Growers
Product of Canada
Canada No. 1 Grade
99¢
/lb 2.18/kg
CLUB PRICE

Corn on the Cob
Grown by Safeway Growers
Product of Canada
Canada No. 1 Grade
6 for 1.98
CLUB PRICE

Locally GROWN

Look inside for the freshest locally grown produce available!

Prices shown only at participating Safeway stores from August 3 to August 11, 2007



WINDMADE™

Carbon Disclosure Project Supply Chain Report 2011

Migrating to a low carbon economy
through leadership and collaboration



Report written for
Carbon Disclosure Project by:
ATKEARNEY

Carbon Disclosure Project
info@cdproject.net
+44 (0) 207 415 7026
www.cdproject.net



CDP Water Disclosure 2010 Global Report

On behalf of 137 investors with assets of US\$16 trillion



Report written for
Carbon Disclosure Project by:
 E&Y

Carbon Disclosure Project
www.cdproject.net
+44 (0) 20 7415 7026
www.cdproject.net

DON'T BUY THIS JACKET



To make it required **135 liters of water** and it generated nearly **20 pounds of CO₂**.

การปรับตัวของธุรกิจเสื้อผ้า



Puma ออกเสื้อผ้าชุด InCycle collection



การปรับตัวของธุรกิจค้าปลีก



การปรับตัวของธุรกิจอาหาร



**“Mankind must
go green or die.”**



Prince Charles